

***VORSIS* Application Note**

AN2008-04

Installing New Factory Presets In The AP3 and HDP3

January 2008 – Jeff Keith

Wheatstone Corporation © 2008 All Rights Reserved
600 Industrial Drive New Bern, NC 28562 USA 252-638-7000
techsupport@wheatstone.com

Background

Since their introduction the Vorsis AP3 and HDP3 processors have received acclaim from users for their audio performance and application versatility. As field experience and the range of possible applications grew we gained experience in how users were configuring the products as well as knowledge of what type of presets they preferred the units to come equipped with from the factory.

We've been working to create a variety of new presets targeted to the wide range of applications that users have found for our popular AP3 and HDP3 products. Both products are now factory equipped with nearly 80 custom tuned presets that fit a wide variety of applications such as AM and FM processing, AM and FM HD processing, web streaming, and production uses.

Units that were shipped to customers prior to the existence of the new factory presets may be upgraded at any time to have them and the following procedure outlines how to do this.

Installing the New Factory Preset Packages

The new AP3 and HDP3 Second Release ("02") Factory Preset Packages should be installed in exactly the order specified. This is necessary because the eight character preset name limit in the AP3/HDP3 hardware makes it possible to inadvertently overwrite similar-named presets from the different categories if care is not used.

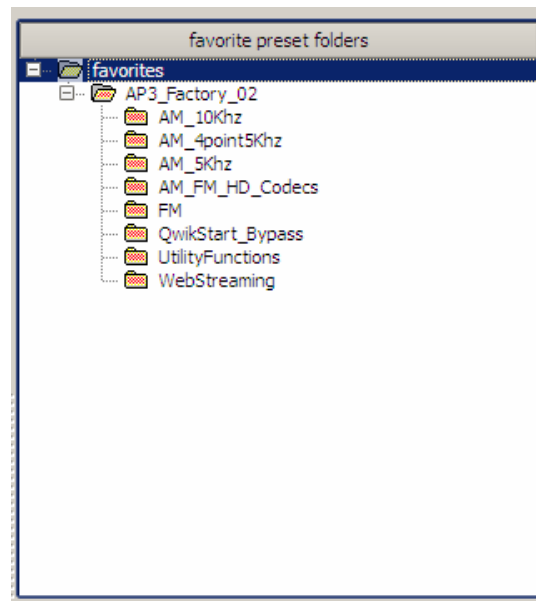
It is recommended that the new Version 3.4.0 GUI be utilized for this task because this version has a bug fix to ensure 100% accurate copying of presets back and forth from the host PC to the AP3 or HDP3 hardware.

Note that while the presets for the AP3 and HDP3 are similar, they will not work in each other's hardware due to some minor internal hardware differences.

Files required: -- AP3 or HDP3 GUI Version 3.4.0
 -- AP3_Factory_02 Preset Package file, or;
 -- HDP3_Factory_02 Preset Package file.

1. Install the Version 3.4.0 AP3 or HDP3 GUI if not already installed on the host PC.
2. Configure the GUI to connect to the target device's assigned IP Address.
3. Connect the GUI to the target AP3 or HDP3 device.

4. Click on the Presets button on the right side of the GUI.
5. Highlight the Basic folder. Rick click and then delete it.
6. Highlight the Favorites folder again.
7. Rick click and select Install Preset Package.
8. Browse to the location of AP3_Factory_02.pkg or HDP3_Factory_02.pkg file and select it.
9. Select and open the new folder in the GUI.
10. Eight subfolders will be displayed as shown in the graphic below. Each of the preset folders contains ten presets that have been carefully tailored for the application described by the individual folder names. The only exception to this is the “QwikStart_Bypass” folder which contains only those two special presets.



11. Select and open the folder “QwikStart_Bypass”.
12. Drag the preset BYPASS to position #9 on the AP3 or HDP3 side of the Presets window.
13. Drag the preset QWKSTRT to position #10 on the AP3 or HDP3 side of the Presets window.

14. Open the folder Utility Functions.
15. Select all presets in that folder and drag them to positions 11 through 20.
16. Open the folder AM_10Khz and drag those presets to positions 21 through 30.
17. Open the folder AM_5Khz and drag those presets to positions 31 through 40.
18. Open the folder AM_4point5Khz and drag those presets to positions 41 through 50.
19. Open the folder FM and drag those presets to positions 51 through 60.
20. Open the folder AM_FM_HD_Codecs and drag those presets to positions 61 through 70.
21. Open the folder WebStreaming and drag those presets to positions 71 through 80.

The Release 2 Factory presets are now installed in the hardware and may be selected using the “Take” dialog button on the upper right corner of the software GUI.

End of procedure.